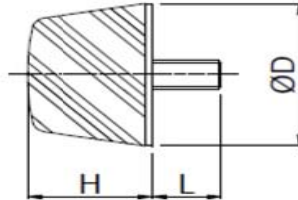




# SAM ENGINEERS

Web: <http://www.samseals.com> : <http://www.rubbersealsandgaskets.com> : <http://www.samrubber.com>  
 Email: [sales@samseals.com](mailto:sales@samseals.com) : [samengineers.sagar@gmail.com](mailto:samengineers.sagar@gmail.com) Cell No: +91 97694 82 432 : +91 98200 82 432

## Buffer Type K/D



Compounds Produced: 43° Shore A (soft)  
 (Natural Rubber) 57° Shore A (medium)  
 68° Shore A (hard)

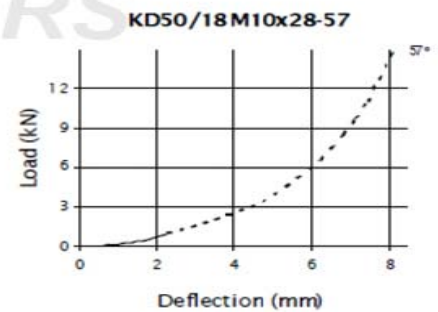
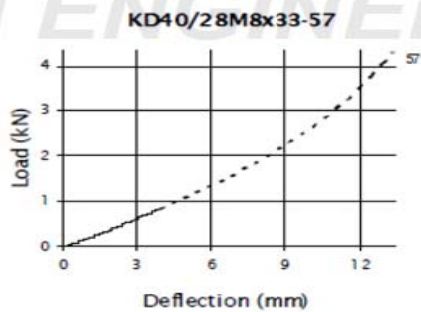
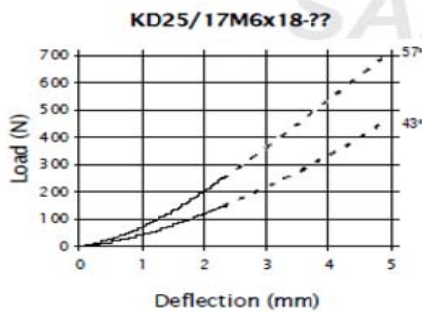
### Available Sizes

• = STANDARD STOCK

Dimensions Dia/Ht (mm)	Screw Thread Size x L (mm)	Special Screw Thread Size (mm)
• 25/17	M6 x 18	M6 x 8, M6 x 10 M6 x 12, M6 x 15 M6 x 20
40/28 40/53	M8 x 23 M8 x 23	M8 x 12, M8 x 13 M8 x 16, M8 x 28 M10 x 20
• 50/18 50/21 50/22.5 50/30 50/35	M10 x 28 M10 x 28 M10 x 28 M10 x 28 M10 x 28	M8 x 23, M10 x 15 M10 x 20, M10 x 33 M12 x 27
• 50/39 *	M10 x 28	
60/22	M10 x 28	M10 x 15, M10 x 20 M10 x 33
75/25 75/28	M12 x 37 M12 x 37	M12 x 27, M12 x 32
• 80/30 ** 80/60	M12 x 32 M12 x 32	M12 x 37
• 125/45 125/80 125/90	M16 x 45 M16 x 45 M16 x 45	

\* These parts are only standard in natural rubber of hardness 57° Shore A  
 \*\* These parts are only available in a rectangular shape (as opposed to circular)

### Compression Characteristics



Regd. Off: A-603, Blue Regency, Off Link Road, Mahavir Nagar, Kandivali (W), Mumbai 400 067, Maharashtra, India.

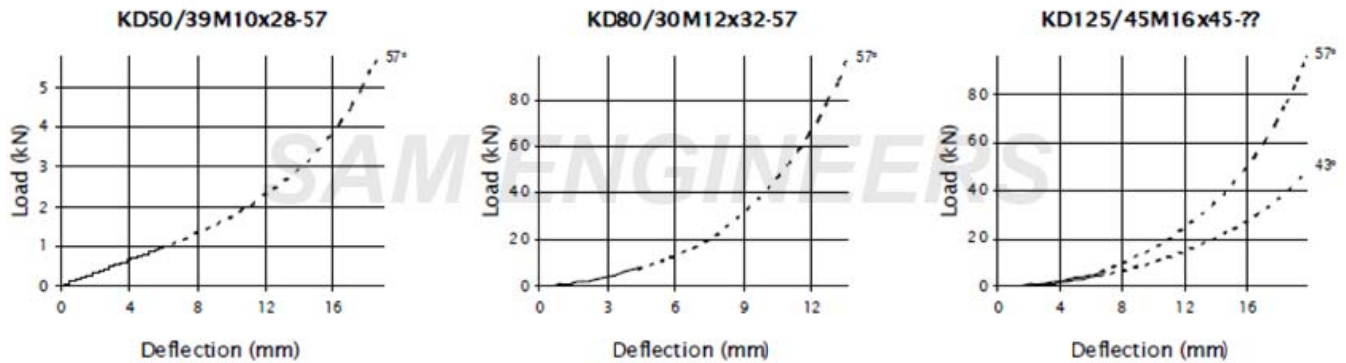
Unit No.2, Jas Industrial Estate, B. P. Road, Opp. Kapol Bank, Goddev Naka, Bhayandar (E), Thane 401-105, Maharashtra, India.



# SAM ENGINEERS

Web: <http://www.samseals.com> : <http://www.rubbersealsandgaskets.com> : <http://www.samrubber.com>  
Email: [sales@samseals.com](mailto:sales@samseals.com) : [samengineers.sagar@gmail.com](mailto:samengineers.sagar@gmail.com) Cell No: +91 97694 82 432 : +91 98200 82 432

## Compression Characteristics



Note: The Load/Deflection graphs are for maximum continuous loads up to 15% strain, the dotted line is for occasional shock loads up to 50% strain

Note: There is a possible deviation of  $\pm 20\%$  in the above load/deflection graphs due to production and hardness tolerances

Regd. Off: A-603, Blue Regency, Off Link Road, Mahavir Nagar, Kandivali (W), Mumbai 400 067, Maharashtra, India.

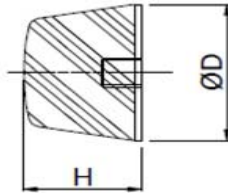
Unit No.2, Jas Industrial Estate, B. P. Road, Opp. Kapol Bank, Goddev Naka, Bhayandar (E), Thane 401-105, Maharashtra, India.



# SAM ENGINEERS

Web: <http://www.samseals.com> : <http://www.rubbersealsandgaskets.com> : <http://www.samrubber.com>  
 Email: [sales@samseals.com](mailto:sales@samseals.com) : [samengineers.sagar@gmail.com](mailto:samengineers.sagar@gmail.com) Cell No: +91 97694 82 432 : +91 98200 82 432

## Buffer Type K/E



Compounds Produced:  
 (Natural Rubber) 43° Shore A (soft)  
 57° Shore A (medium)  
 68° Shore A (hard)

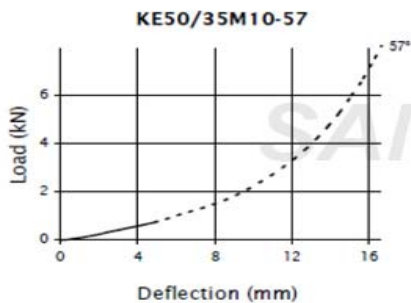
### Available

• = STANDARD STOCK

Dimensions Dia/Ht (mm)	Screw Thread Size x L (mm)	Special Screw Thread Size (mm)
25/17	M6	
40/28	M8	
40/53	M8	
50/18	M10	
50/21	M10	
50/22.5	M10	
50/30	M10	M8, M12
• 50/35	<b>M10</b>	
50/39	M10	
60/22	M10	
75/25	M12	
75/28	M12	M16
80/25	M12	
• 80/60 *	<b>M12</b>	
125/45	M16	
125/80	M16	M20
• 125/90 *	<b>M16</b>	

\* These parts are only standard in natural rubber of hardness 57° Shore A

## Compression Characteristics



Regd. Off: A-603, Blue Regency, Off Link Road, Mahavir Nagar, Kandivali (W), Mumbai 400 067, Maharashtra, India.

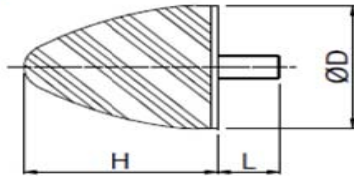
Unit No.2, Jas Industrial Estate, B. P. Road, Opp. Kapol Bank, Goddev Naka, Bhayandar (E), Thane 401-105, Maharashtra, India.



# SAM ENGINEERS

Web: <http://www.samseals.com> : <http://www.rubbersealsandgaskets.com> : <http://www.samrubber.com>  
 Email: [sales@samseals.com](mailto:sales@samseals.com) : [samengineers.sagar@gmail.com](mailto:samengineers.sagar@gmail.com) Cell No: +91 97694 82 432 : +91 98200 82 432

## Buffer Type KP/D



Compounds Produced: 43° Shore A (soft)  
 (Natural Rubber) 57° Shore A (medium)  
 68° Shore A (hard)

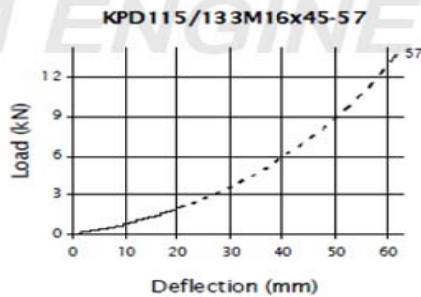
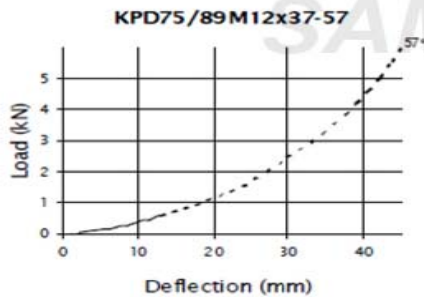
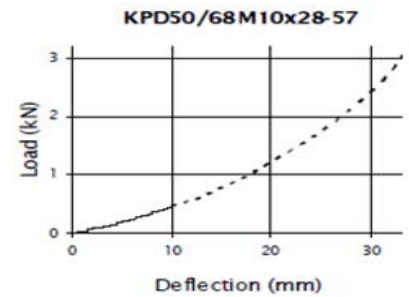
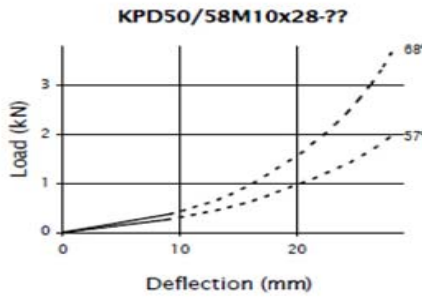
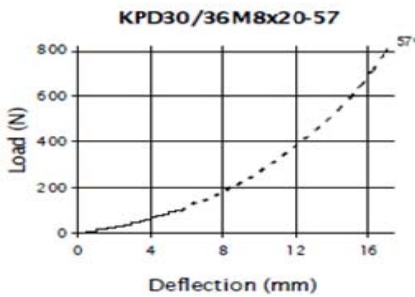
### Available Sizes

• = STANDARD STOCK

Dimensions Dia/Ht (mm)	Screw Thread Size x L (mm)	Special Screw Thread Size (mm)
• 30/36 *	M8 x 20	M6 x 15, M8 x 8 M8 x 10, M8 x 13 M8 x 16, M8 x 18 M8 x 23, M8 x 27
• 50/58 *	M10 x 28	M8 x 23, M10 x 15
• 50/61	M10 x 28	M10 x 20, M10 x 33
• 50/68 *	M8 x 36	M12 x 27
75/89	M12 x 37	M12 x 27, M12 x 32
• 115/133 *	M16 x 45	

\* These parts are only standard in natural rubber of hardness 57° Shore A

### Compression Characteristics



Regd. Off: A-603, Blue Regency, Off Link Road, Mahavir Nagar, Kandivali (W), Mumbai 400 067, Maharashtra, India.

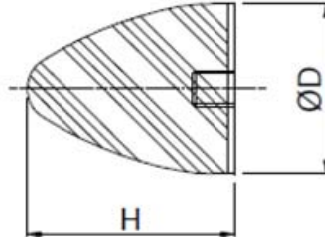
Unit No.2, Jas Industrial Estate, B. P. Road, Opp. Kapol Bank, Goddev Naka, Bhayandar (E), Thane 401-105, Maharashtra, India.



# SAM ENGINEERS

Web: <http://www.samseals.com> : <http://www.rubbersealsandgaskets.com> : <http://www.samrubber.com>  
 Email: [sales@samseals.com](mailto:sales@samseals.com) : [samengineers.sagar@gmail.com](mailto:samengineers.sagar@gmail.com) Cell No: +91 97694 82 432 : +91 98200 82 432

## Buffer Type KP/E



Compounds Produced:  
 (Natural Rubber) 43° Shore A (soft)  
 57° Shore A (medium)  
 68° Shore A (hard)

### Available Sizes

• = STANDARD STOCK

Dimensions Dia/Ht (mm)	Screw Thread Size x L (mm)	Special Screw Thread Size (mm)
30/36	M8	
50/58	M10	
50/61	M10	M8, M12
50/68	M10	
75/89	M12	M16
115/133	M16	M20

\* These parts are only standard in natural rubber of hardness 57° Shore A

Regd. Off: A-603, Blue Regency, Off Link Road, Mahavir Nagar, Kandivali (W), Mumbai 400 067, Maharashtra, India.

Unit No.2, Jas Industrial Estate, B. P. Road, Opp. Kapol Bank, Goddev Naka, Bhayandar (E), Thane 401-105, Maharashtra, India.

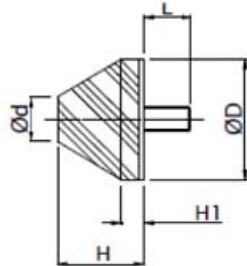




# SAM ENGINEERS

Web: <http://www.samseals.com> : <http://www.rubbersealsandgaskets.com> : <http://www.samrubber.com>  
 Email: [sales@samseals.com](mailto:sales@samseals.com) : [samengineers.sagar@gmail.com](mailto:samengineers.sagar@gmail.com) Cell No: +91 97694 82 432 : +91 98200 82 432

## Buffer Type KS/D



Compounds Produced: 43° Shore A (soft)  
 57° Shore A (medium)  
 (Natural Rubber) 68° Shore A (hard)

### Available Sizes

• = STANDARD STOCK

Dimensions Dia/Ht (mm)	Screw Thread Size x L (mm)	Special Screw Thread Size (mm)
15/20 (H1 - 10mm, Ød - 7.5mm)	M4 x 13	M4 x 6, M4 x 8 M4 x 10, M4 x 15
25/15 (H1 - 3mm, Ød - 7.5mm)	M6 x 18	M6 x 8, M6 x 10 M6 x 12, M6 x 15 M6 x 20
25/28 (H1 - 5mm, Ød - 5.5mm)	M6 x 18	M6 x 8, M6 x 10 M6 x 12, M6 x 15 M6 x 20

Regd. Off: A-603, Blue Regency, Off Link Road, Mahavir Nagar, Kandivali (W), Mumbai 400 067, Maharashtra, India.

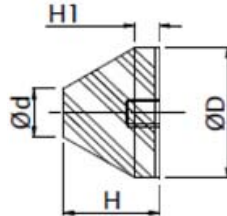
Unit No.2, Jas Industrial Estate, B. P. Road, Opp. Kapol Bank, Goddev Naka, Bhayandar (E), Thane 401-105, Maharashtra, India.



# SAM ENGINEERS

Web: <http://www.samseals.com> : <http://www.rubbersealsandgaskets.com> : <http://www.samrubber.com>  
 Email: [sales@samseals.com](mailto:sales@samseals.com) : [samengineers.sagar@gmail.com](mailto:samengineers.sagar@gmail.com) Cell No: +91 97694 82 432 : +91 98200 82 432

## Buffer Type KS/E



Compounds Produced: 43° Shore A (soft)  
 (Natural Rubber) 57° Shore A (medium)  
 68° Shore A (hard)

### Available Sizes

• = STANDARD STOCK

Dimensions Dia/Ht (mm)	Screw Thread Size x L (mm)	Special Screw Thread Size (mm)
15/20 (H1 - 10mm, Ød - 7.5mm)	M4	
25/15 (H1 - 3mm, Ød - 7.5mm)	M6	
25/28 (H1 - 5mm, Ød - 5.5mm)	M6	

Regd. Off: A-603, Blue Regency, Off Link Road, Mahavir Nagar, Kandivali (W), Mumbai 400 067, Maharashtra, India.

Unit No.2, Jas Industrial Estate, B. P. Road, Opp. Kapol Bank, Goddev Naka, Bhayandar (E), Thane 401-105, Maharashtra, India.